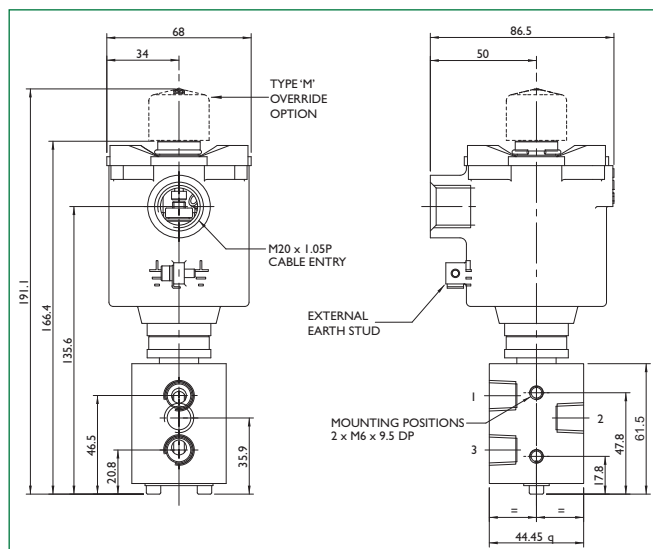


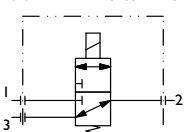
## FPI0P



### Dimensional Drawings

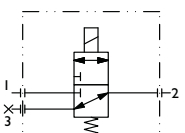


#### SCHEMATIC 3/2 NU

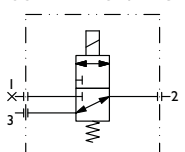


NU Normally Universal offered as standard.

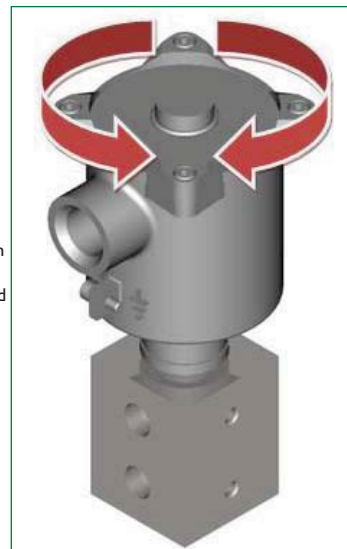
#### SCHEMATIC 2/2 NC



#### SCHEMATIC 2/2 NO



Valve suitable for Universal operation 2/2 & 3/2. Normally Open and Normally Closed. Plug port 3 for 2/2 Normally Closed function. (Plugs available as a line item). Plug port 1 for 2/2 Normally Open function. (Plugs available as a line item).



### FPI0P Selection Chart - Ordering Example

FP10P										Model Code		
S1		10 bar maximum valve pressure								Operator		
S2		16 bar maximum valve pressure (For AC Coils = 6.5 Watts)										
S3		35 bar maximum valve pressure - 1/4" only standard temperature (Typically 0.4 CV)										
04		1/4" NPT body ported								Connections		
06		3/8" NPT body ported										
08		1/2" NPT body ported										
32		3-way, 2-position								Valve Configuration		
NU		Normally Universal										
S		Nitrile		(-20°C to +130°C)		For maximum operating temperatures see 'T' Rating Limitations for Ex emb & Ex d on pages 11 & 12.				O-ring Material		
V		Viton (Standard)		(-20°C to +180°C)								
AG		Silicone		(-60°C to +180°C)								
AL		Fluorosilicone		(-60°C to +180°C)								
XX		Refer to Solenoid options tables.				74 (Ex emb) Page 11 - Table 1		77 (Ex d) Page 12 - Table 2		Solenoid * **		
A		ATEX/IECEx Dual Certified/Labelled				74(Ex emb)		77(Ex d)				
G		GOST				✓		✓		Solenoid Approval		
I		INMETRO				X		✓				
N		NEPSI*				X		✓				
U		CSA (US) ATEX Dual Certified/Labelled				X		✓				
3		T4 IIC		77 (Ex d)		See 'T' Rating Limitations for Ex emb & Ex d on pages 11 & 12.				T-Rating & Gas Group		
6		T5 IIC		77 (Ex d)								
9		T6 IIC		77 (Ex d)								
XXX		Voltage, refer to Solenoid option tables.		74 (Ex emb) Page 11 - Table 1		77 (Ex d) Page 12 - Table 2		Voltage				
M		Electrical to switch or temporary manual override								Options		
ML		Electrical and manual required to latch or temporary manual override (3.0 Watts Ex d Only)										
MLT		Electrical and manual required to latch - tamperproof										
LE		Latched Energised (NO/NC Only) (6.5 Watts Ex d Only)										
XX		Power (W)		74 (Ex emb) - 4.4 & 6.8 Watts		Page 11 - Table 1		77 (Ex d) - 3.5 & 5.7 Watts		Page 12 - Table 2		Power
K6		BSPP Ports								Option		
K85		1/2" NPT conduit entry								Option		
XX										Revision Number		
FP10P-S2-08-32-NU-V-77 A 9-24D-ML-35 - K6-K85-XX										Ordering Example		

**FPI0P-S2-08-32-NU-V-77 A 9-24D-ML-35-K6-K85-XX**

Ordering Example

For green block sections, please refer to the same colour section on pages 11, 12 or 13.

\* For China, please note that the solenoid operator is Type 87.

\*\* Special conditions for safe use - The supply circuit shall be fitted with a fuse capable of meeting a 1500Amp short circuit current.

**Accuracy of information**  
We take care to ensure that product information in this catalogue is reasonably accurate and up-to-date. However, our products are continually developed and updated so to ensure accurate and up-to-date information please refer to the product catalogue issue list on our web site or contact a member of our sales team.

When selecting a product, the applicable operating system design must be considered to ensure safe use. The products function, material compatibility, adequate ratings, correct installation, operation and maintenance are the responsibilities of the system designer and user.

**Quality Assurance**  
All Bifold products are manufactured to a most stringent QA programme to ensure that every product will give optimum performance and reliability. We are third party certified to EN ISO 9001:2008. Functional test certificates, letter of conformity and copies of original mill certificates, providing total traceability are available on request, to BSEN 10204.3.1.8 where available. We reserve the right to make changes to the specifications and design etc., without prior notice.